

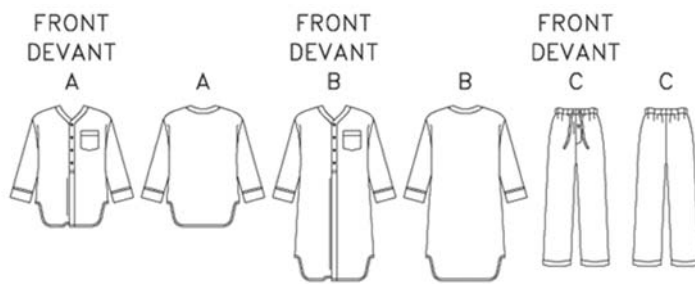
# Materials & Supplies List: Beginning Garment Sewing

Hanna Geshelin, M.Ed., teacher

This pattern uses many basic sewing techniques that you will use in any later sewing project. It will fit almost anyone, and students may choose any of the views offered. This class is for people who know how to use their sewing machine.

*Fabric must be woven cotton or cotton blends like quilting cotton. Fabrics such as flannel, fleece, velour, and knits are not suitable for the purposes of this class. Please do not choose plaids or one-way designs as these present difficulties that we will not address in this class. If you will be making a L or XL, be sure the fabric is at least 44" wide. If it is less, please purchase an additional 1/2 yard.*

Be sure to purchase regular sewing thread. Many types of thread are not suitable for sewing seams, such as buttonhole, quilting, upholstery, and machine embroidery threads. Avoid bargain thread and bargain interfacing as their quality is low.



**NOTIONS:** Nightshirt A, B: Four <sup>5</sup>/<sub>8</sub>" Buttons. Pants C: 1" Wide Elastic: <sup>7</sup>/<sub>8</sub> yd. for Kids; 1<sup>1</sup>/<sub>2</sub> yds. for Adult; One <sup>1</sup>/<sub>2</sub>" Button for fly front (not necessary for girls or women).

**Sizes** (Adult sizes are chest measurements)

Adults: S (34-36), M (38-40), L (42-44), XL (46-48);

Kids: 3-4, 5-6, 7-8, 10-12

	Fabric amounts below are given in yards							
	Children's Sizes				Adult Sizes			
	3-4	5-6	7-8	10-12	S	M	L	XL
<b>NIGHTSHIRT A</b>								
45" wide	1 3/4	2	2 1/8	2 3/8	2 7/8	3 1/8	3 1/2	3 5/8
60" wide	1 1/4	1 1/4	1 5/8	1 1/2	1 3/4	2 3/8	2 5/8	2 5/8
<b>NIGHTSHIRT B</b>								
45" wide	2	2 1/8	2 1/2	3 1/8	3 3/4	4 1/4	4 3/8	4 3/8
60" wide	1 1/2	1 5/8	1 3/4	1 7/8	2 1/4	3	3	3 5/8
<b>FUSIBLE INTERFACING A, B</b>								
18" or 20" wide	1/2	5/8	5/8	5/8	3/4	3/4	3/4	3/4
<b>PANTS C</b>								
45" wide	1 5/8	1 3/4	2	2 1/2	2 5/8	2 5/8	2 5/8	2 5/8
60" wide	1 1/4	1 3/8	1 1/2	1 3/4	2 1/8	2 1/4	2 3/8	2 5/8

Supplies list on page 2.

## **Supplies List**

### **Bring to class:**

Sewing machine

Extra sewing machine needle(s)

Thread, dark or brightly colored

Bobbin with same colored thread

Zipper foot

Regular presser foot

Pins

Scissors

Seam ripper

### **Optional:**

Seam gauge

Chalk or marking pencil

1/4 in. basting tape

Invisible zipper foot

**If you are bringing a sewing machine, be sure it is in good working order. If you do not have a sewing machine and sewing tools you may rent them for \$45. Arrangements must be made with the instructor at least 48 hours before the first class.**